



811 Oasis ADA Plaza

Trailer Specifications // Standard Equipment

Unibody Steel Frame 8' x 11'
Entrance / Exit Door (1)
High Efficiency Ducted A/C
Laminate Interior Walls – Customer Choice of Color
Door Trim Package
3" Cam Lock Waste Valve
FiberCorr Smooth Finish Ceiling
Lockable Thermostat
Waste Tank Sight Glass
¾" Marine Plywood T/G Floor
Wired for Optional Baseboard Heat
Seamless Aluminum Roof
Multi Source Sound System
Aluminum Exterior – Customer Choice of Color
Oak Trim and Vanities – Customer Choice of Color
Fold-in-Door ADA Ramp

Five Year Warranty Steel Frame
Waste Tank 80 gallons
Fresh Water Tank 65 gallons
Fork Lift Accessible
Frame Undercoating
¾" Fresh Water Connection
All Walls and Ceiling Insulated
Recessed Night Light for Door
Rain Gutter over Door
Floor Joist 2" x 2" Steel 16" O/C
Five Horizontal Belt Rails
Truss Rafters 16" O/C
Aluminum Kick Plates
Vinyl Flooring
36" Commercial Door
20 Amp Electrical Circuits

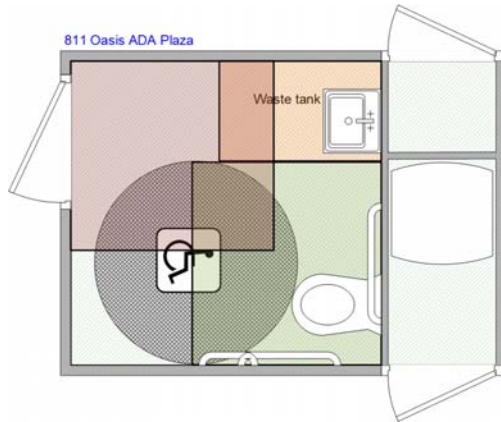
ADA Unisex Accommodations

China Flushing Water Saver ADA Toilet
Delta Water Saver Faucet
ADA Wall Rails
ADA Door Handle and Locking System
Wall Recessed Towel Dispenser and Waste Receptacle

Framed Glass Mirror
ADA Sink
ADA Door Closure
Stainless Sanitary Receptacle

The Oasis Series

All the rugged strength of our commercial trailers with a range of designer interior packages, providing a quality refined look for special events requirements.
Attractive, rugged, highly functional commercial grade restrooms trailers
Range of exterior colors
Choice of interior color combinations
Fold up steps standard with optional porch step available
Standard high efficiency A/C and optional heat packages
Over 30 years' experience goes into each trailer manufactured



Drawing not to scale.



Please Note

This unit is without axles and wheels. It is transportable by a flatbed trailer (not included) and maneuvered into place by fork truck(s). It is not designed as a permanent building as it is built to codes specific to portable structures. If use as a permanent building is planned, please consult local authorities to determine conformity to codes applicable for such use.

Available Options

Heat Package (interior heaters only)	
Cold Weather Package (includes the heat package)	
Arctic Weather Package (for more extreme temperatures) // Floor plan may have to be increased in size. Price to be determined.	
Hot Water System	
Upgrade to Rubberized Flooring	
Baby Change Station	

Since 1988 America's Premier Specialty Trailer Manufacturer