



### 811 Traditional ADA Plaza

#### Trailer Specifications // Standard Equipment

Unibody Steel Frame 8' x 11'  
Entrance / Exit Door (1)  
High Efficiency Non-Ducted A/C  
FiberCorr Interior Walls – White  
Door Trim Package  
3" Cam Lock Waste Valve  
FiberCorr Smooth Finish Ceiling  
Lockable Thermostat  
Waste Tank Sight Glass  
¾" Marine Plywood T/G Floor  
Wired for Optional Baseboard Heat  
Seamless Aluminum Roof  
Aluminum Kick Plates  
Aluminum Exterior – Customer Choice of Color  
Fold-in-Door ADA Ramp

Five Year Warranty Steel Frame  
Waste Tank 80 gallons  
Fresh Water Tank 65 gallons  
Fork Lift Accessible  
Frame Undercoating  
¾" Fresh Water Connection  
All Walls and Ceiling Insulated  
Recessed Night Light for Door  
Rain Gutter over Door  
Floor Joist 2" x 2" Steel 16" O/C  
Five Horizontal Belt Rails  
Truss Rafters 16" O/C  
Vinyl Flooring – Galaxy  
20 Amp Electrical Circuits  
36" Commercial Door

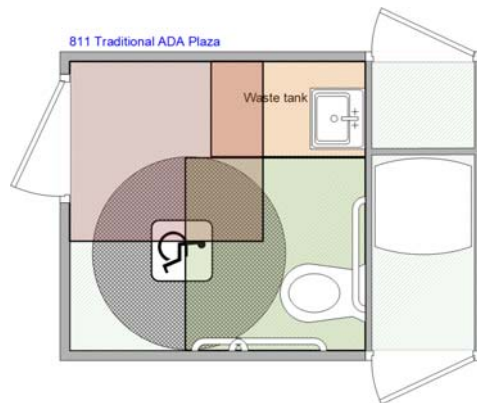
#### ADA Unisex Accommodations

China Flushing Water Saver ADA Toilet  
Delta Water Saver Faucet  
ADA Door Handle & Locking System  
Safety Glass Mirror  
Wall Recessed Towel Dispenser and Waste Receptacle

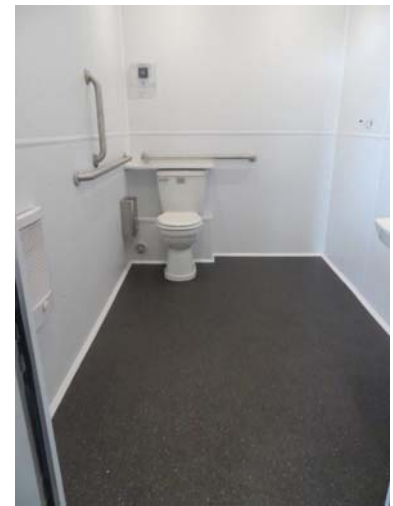
ADA Sink  
ADA Wall Rails  
ADA Door Closure  
Stainless Sanitary Receptacle

#### The Traditional Series

Attractive, rugged, highly functional commercial grade restrooms trailers  
Designed for cost effective heavy duty use  
Over 18 floor plans available  
Range of exterior colors  
Choice of interior color combinations  
Fold up steps standard with optional porch step available  
Standard high efficiency A/C and optional heat packages  
Over 30 years' experience goes into each trailer manufactured



Drawing not to scale.



### Please Note

This unit is without axles and wheels. It is transportable by a flatbed trailer (not included) and maneuvered into place by fork truck(s). It is not designed as a permanent building as it is built to codes specific to portable structures. If use as a permanent building is planned, please consult local authorities to determine conformity to codes applicable for such use.

### Available Options

Heat Package (interior heaters only)	
Cold Weather Package (includes the heat package)	
Arctic Weather Package (for more extreme temperatures) // Floor plan may have to be increased in size.	
Hot Water System	
Upgrade to Rubberized Flooring	
Baby Change Station	
Multi Source Sound System	

Since 1988 America's Premier Specialty Trailer Manufacturer