



### Oasis ADA Plus Two Plaza Unit

#### Standard Equipment

Unibody Steel Frame 8½' x 13'3"  
 Five Year Warranty Steel Frame  
 Lined Steel Waste Tank 140 gallons  
 Waste Tank Sloped to Bottom Discharge  
 Poly Fresh Water Tank 115 gallons  
 High Efficiency Ducted A/C with Two Year Warranty  
 34" Commercial Doors (36" for ADA)  
 Locks Keyed Alike  
 Rain Gutters over each Door  
 ¾" Weatherproof Floor  
 Laminate Interior Walls – Customer Choice of Color  
 All Walls and Ceiling Fully Insulated  
 Truss Rafters 16" O/C  
 Floor Joist 2" x 2" Steel 16" O/C  
 Side Wall Belt Rails for Lateral Strength  
 ¾" Fresh Water Connection  
 Seamless Roofing  
 Multi Source Sound System with Playlist Option

Wired for Optional Baseboard Heat  
 FiberCorr Smooth Finish Ceiling  
 Waste Tank Sight Glass  
 Frame and Tank Undercoating  
 2 5/16" Adjustable Hitch  
 Lockable Thermostat  
 Entrance / Exit Doors (3)  
 Door Trim Package  
 Aluminum Kick Plates  
 20 Amp Electrical Circuit  
 Recessed Night Lights for Doors  
 LED Exterior Lights  
 Aluminum Exterior  
 Wood Trim and Vanities  
 Vinyl Flooring  
 Fold-in-Door ADA Ramp  
 3" Cam-Lock Waste Valve

#### Women's Accommodations

China Flushing Water Saver Toilet  
 Wood Vanity with Solid Surface Sink Top  
 Wall Recessed Towel Dispenser and Waste Receptacle

Stainless Sanitary Receptacle  
 Delta Water Saver Faucet  
 Framed Glass Mirror

#### Men's Accommodations

China Flushing Water Saver Toilet  
 Wood Vanity with Solid Surface Sink Top  
 Wall Recessed Towel Dispenser and Waste Receptacle

Framed Glass Mirror  
 Delta Water Saver Faucet

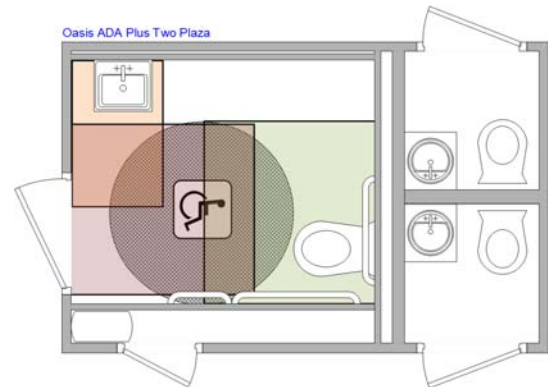
#### ADA Unisex Accommodations

China Flushing Water Saver ADA Toilet  
 Stainless Sanitary Receptacle  
 Framed Glass Mirror  
 ADA Door Handle & Locking System  
 Wall Recessed Towel Dispenser and Waste Receptacle

ADA Sink  
 ADA Wall Rails  
 Delta Water Saver Faucet  
 ADA Door Closure

#### The Oasis Series

All the rugged strength of our commercial trailers with a range of designer interior packages, providing a quality refined look for special events requirements. Upgraded interior packages.



### Available Options

|  |  |
|--|--|
| Heat Package – Electric baseboard heaters only   |  |
| Unique Cold Weather Package – Includes the heat package and Thermon heat tracing is applied to the sides of the tank which is sprayed with foam insulation.    |  |
| Unique Arctic Weather Package – Includes a propane furnace and Thermon heat tracing is applied to the sides of the tank which is sprayed with foam insulation. |  |
| Hot Water System   |  |
| Upgrade to Rubberized Flooring   |  |
| Baby Change Station  |  |
| Spare Tire – 15"   |  |
| Upgrade to Electric Hands Free Delta Faucet  |  |

**Since 1988 America's Premier Specialty Trailer Manufacturer**