



### Traditional ADA Plus Six Plaza Unit

#### Module Specifications // Standard Equipment

Unibody Steel Frame 8' x 21'  
High Efficiency Non-Ducted A/C  
Entrance / Exit Doors (7)  
FiberCorr Interior Walls – White  
FiberCorr Smooth Finish Ceiling  
Wired for Optional Baseboard Heat  
Waste Tank Sight Glass  
¾" Marine Plywood T/G Floor  
Truss Rafters 16" O/C  
Seamless Aluminum Roof  
Five Horizontal Belt Rails  
Locks Keyed Alike  
3" Cam Lock Waste Valve  
34" Commercial Doors (36" for ADA)  
Aluminum Exterior – Customer Choice of Color  
Fold-in-Door ADA Ramp

Five Year Warranty Steel Frame  
Waste Tank 700 gallons  
Fresh Water Tank 125 gallons  
Fork Lift Accessible  
Lockable Thermostat  
Door Trim Package  
Frame Undercoating  
Floor Joist 2" x 2" Steel 16" O/C  
All Walls and Ceiling Insulated  
Recessed Night Lights for Doors  
Rain Gutters over each Door  
Aluminum Kick Plates  
¾" Fresh Water Connection  
20 Amp Electrical Circuits  
Vinyl Flooring – Galaxy  
Single Step Assemblies

#### Traditional Series

Attractive, rugged, highly functional commercial grade restrooms trailers. Designed for cost effective heavy duty use.

#### Three Women's Accommodations

China Flushing Water Saver Toilets – White  
Lockable Vanities with Solid Surface Sink Tops – White  
Wall Recessed Towel Dispenser and Waste Receptacle

Delta Water Saver Faucets  
Safety Glass Mirrors  
Stainless Sanitary

#### Three Men's Accommodations

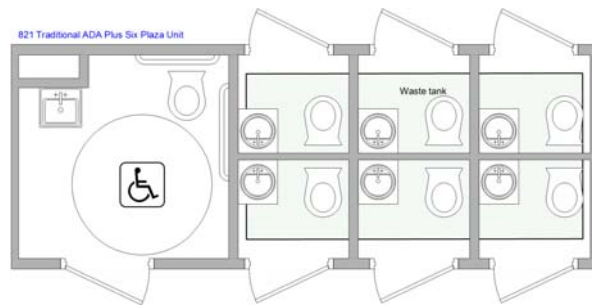
China Flushing Water Saver Toilets – White  
Lockable Vanities with Solid Surface Sink Tops – White  
Wall Recessed Towel Dispenser and Waste Receptacle

Delta Water Saver Faucets  
Safety Glass Mirrors

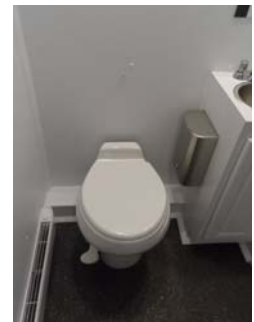
#### ADA Accommodations

China Flushing Water Saver ADA Toilet  
Stainless Sanitary Receptacle  
ADA Door Handle & Locking System  
Delta Water Saver Faucet  
Wall Recessed Towel Dispenser and Waste Receptacle

ADA Sink  
ADA Door Closure  
ADA Wall Rails  
Safety Glass Mirror



Drawing not to scale.



### Please Note

This unit is without axles and wheels. It is transportable by a flatbed trailer (not included) and maneuvered into place by fork truck(s). It is not designed as a permanent building as it is built to codes specific to portable structures. If use as a permanent building is planned, please consult local authorities to determine conformity to codes applicable for such use.

### Available Options

Heat Package (interior heaters only)	
Cold Weather Package (includes the heat package)	
Arctic Weather Package (for more extreme temperatures) // Floor plan may have to be increased in size. Price to be determined.	
Upgrade to Electric Hands Free Delta Faucets	
Hot Water System	
Baby Change Station	
Multi Source Sound System	
Upgrade to Rubberized Flooring	

Since 1988 America's Premier Specialty Trailer Manufacturer